



# St Valentine's Saunter

Upside Down Rogaine  
14-15 February 1998  
Wandering

SCALE 1 : 50,000



Contour interval 5 m



## LEGEND

- Sealed road
- Gravel road
- Track
- Fence line
- Forrest boundary
- Building
- Watercourse
- Dam
- Water drop
- Control
- Hash house
- Out of bounds
- Rock outcrop or clearing

### Western Australian Rogaining Association

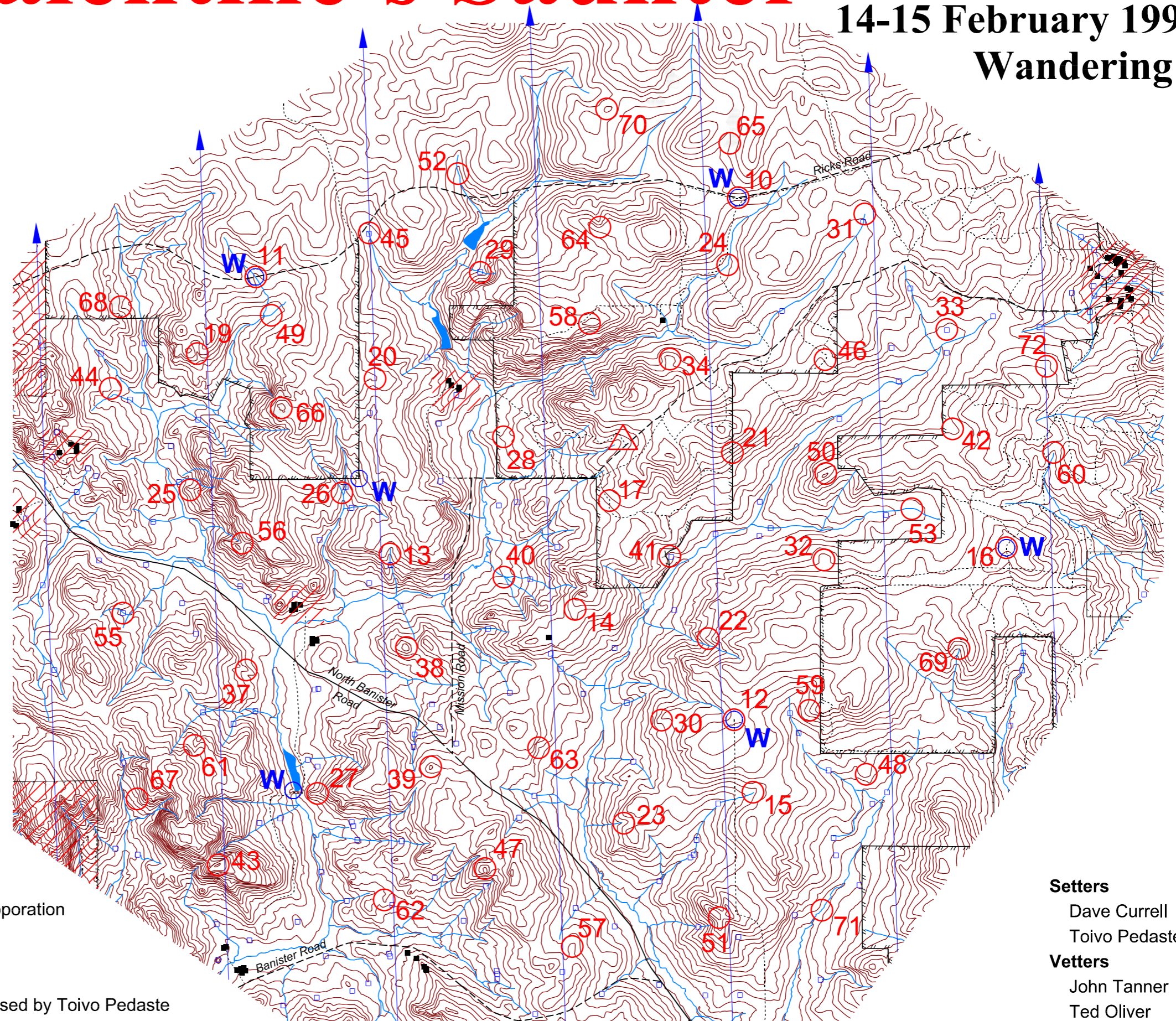
PO Box 1201, Subiaco, WA 6008

### Special thanks to:

- Max and Virginia Watts
- Steve and Marie Watts
- Bob and Inez Treasure
- Malcom and Noleen Tresure
- Steve Jacobs and the Southern Aboriginal Coporation
- Max Humber and CALM

### for use of their land

Cartographical information from CALM, rogained by Toivo Pedaste



### Setters

- Dave Currell
- Toivo Pedaste

### Vetters

- John Tanner
- Ted Oliver

# St Valentine's Saunter, Upside Down Rogaine, 14 February 1998

No.	Description	Points	No.	Description	Points	Important information
W	(near 26) The fence junction		37	On the rocky spur	60	<b>Control Cards</b> From 7.30pm Sat.
W	(near 27) The dam wall, west end		38	On the knoll	60	
			39	On the knoll	60	<b>Briefing</b> 7.45pm Sat.
			40	A small swamp, Sth side	60	
			41	The dam, 20m SW	60	<b>Start</b> 8.00pm Sat.
			42	In the shallow gully	60	
			43	On the knoll	70	<b>Finish</b> 12 hours later
			44	On the spur	70	
			45	The dam, Sth wall	70	<b>Hash House</b> <b>Breakfast Menu</b> Open 12 midnight Closed 10.00am Sun.
10	The track bend	20	46	The track bend	70	
11	The road/watercourse junction	20	47	On the knoll	70	
12	The track end	20	48	On the spur	70	
13	Head of the watercourse	30	49	The watercourse bend	70	<b>Astronomical</b> Sunset Saturday 7.08pm Moonrise Saturday 8.45pm Sunrise Sunday 5.53am Moonset Sunday 8.09am
14	On the spur	30	50	On the knoll	70	
15	Head of the watercourse, on a bank	30	51	On the knoll	70	
16	The track bend	30	52	In the watercourse	70	
17	The track bend	30	53	The creek bend	70	
19	In the gully	40	55	The dam, 30m E	80	<b>Controls Used</b> 59 <b>Total Points</b> 3700
20	On the spur	40	56	On the saddle	80	
21	On the fence, at a fence junction	40	57	On the spur	80	
22	On the spur	40	58	On the knoll	80	
23	Head of the watercourse	40	59	On the spur	80	
24	On the watercourse	40	60	The head of the watercourse	80	
25	On the spur	50	61	In the gully	90	
26	The watercourse junction	50	62	On the spur, on a bolder cluster	90	
27	On the spur	50	63	In the gully	90	
28	On the spur	50	64	On the spur	90	
29	The dam, E side	50	65	In the large clearing, on a blackboy	90	
30	On the rocky spur	50	66	On the top of the rock surface, on a cairn	90	
31	The head of the watercourse	50	67	The head of the gully	100	
32	On the spur	50	68	The rock surface, E edge	100	
33	The dam, 30m W	50	69	The head of the watercourse	100	
34	On the spur, on a fence	50	70	On the knoll	100	
			71	A fence/watercourse crossing	100	
			72	On the spur	100	